

• • www.mbewenhleprojects.co.za

COMPANY PROFILE

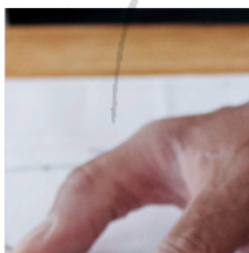
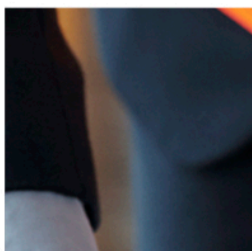
Email: info@mbewenhleprojects.co.za

Reg No. 2015/224214/07

5325 Zone 5 Pimville 1809



Mbewenhle
Projects ■ ■



Prepared by...
Mr B.C.MBEWE

We are 100% black Business Corporation
according to the government's point
system



Mbewenhle Projects.co.za

Mbewenhle Projects (PTY) LTD qualifies as a Small
Business Corporation in terms of the SARS Tax



Tel: 076 728 6606



FAX: 086 597 0144



5325 Zone 5 Pimville



Mbewenhle
Projects ■ ■

CONTENT



Pimville Zone 5- City of Johannesburg
Gauteng - Soweto- 1868

Mbewenhle

Projects ■ ■ Reg No.2015/224214/07



www.mbewenhleprojects.co.za

0.1 OVERVIEW

0.2 OUR VISION

0.3 SERVICES

0.4 OWNERSHIP

0.5 CONTACT DETAILS

Tel: 076 728 6606

☎ FAX: 086 597 0144

✉ info@mbewenhleprojects.co.za

🖱 www.mbewenhleprojects.co.za

Mr B.C.MBEWE

Managing Director

Reg No. 2015/224214/07

Zone 5 Pimville 1809



Mbewenhle

Projects ■ ■



Pimville Zone 5 - City of Johannesburg
Gauteng - Soweto - 1868

Mbewenhle

Projects ■ ■ ■ Reg No.2015/224214/07

www.mbewenhleprojects.co.za

Overview..

Mbewenhle Projects (PTY) LTD was formally registered in 2015 and established working relationship within this industry.

We have developed a division that specialises in the construction activity which includes Building, Civil working, Road services and Paving.

EXECUTIVE SUMMARY PROFILE

Mbewenhle Projects Has Been in Construction and Landscaping Business for 7 years, To be Precise we have been doing general building maintenance of structures of government departments.

info@mbewenhleprojects.co.za

5325 Zone 5 Pimville 1809



Our Vision

To become an enterprising competitor in the construction industry, taking advantage of various opportunities presently in South Africa, contribution to the growth of our industry and rendering a service of high quality that will add value, and enable women as well as young to participate in the economic main stream.

Our Mission Statement

- To strive a safe and healthy environment, adhering to the ruling legislation concerning subcontractors, contractors, employees and civil working.
- To train up contractors to be well equipped, and to assist the with their resources.
- Seek to build affordable home according to the prescribed standards as per the NHBRC requirements, ensuring delivery to specifications.

● info@mbewenhleprojects.co.za



Pimville Zone 5 - City of Johannesburg
Gauteng - Soweto - 1868

Mbewenhle

Projects ■ ■ ■ Reg No.2015/224214/07

www.mbewenhleprojects.co.za

services



Mbewenhle
Projects ■ ■



SERVICES



Construction

We undertake to effect any construction work from initial foundation and excavation works through to brickwork, partitioning, professionally and according to client specification

Renovation

We assist our clients to renovate and upgrade their current properties. This includes plastering, painting and tiling.

Plumbing

We supply and fit all requirements to specification and this is also linked to our other services and we offer this to ensure a one stop office.

Security

We do security fencing, concrete palisade, steel palisade, clearvu fencing and electrical fencing

Horticulture Services

We do Grass Cutting and Tree Felling and Supply and Install Instant Lawn, Land Rehabilitation, Rotavate land supply and feed the land with Seedlings to soil for it to be ready for lawn and Irrigation.

services



Mbewenhle
Projects ■ ■





Mbewenhle
Projects ■ ■



OUR CLIENTS



Advisory Services

We seek to help our clients to formulate a comprehensive development and building plan that will be functional and cost effective, as well as meeting their needs.

We even undertake to effectively maintain the Storm-Water drainages and Civil Works

Ownership & Management

We are a 100% owned and managed Black South African Close Corporation, operating under auspices, a male principal member who holds all the equity and takes an active role in day-to-day operations, and development of the company.

Classification Certification

Mbewenhle Projects (PTY) LTD qualifies as a Small Business Corporation in terms of the SARS tax act since it has not receive income in excess of R5 million rands.

BBBEE Certification

We are 100% black Business Corporation according to the gorfvements point system

Construction Industry Development Board

CIDB Current status : 3 GB PE, 1SH PE, 1CE PE Com-
pany Profile Mbewenhle Projects (PTY) LTD

Tel: 076 728 6606

☎ FAX: 086 597 0144

✉ info@mbewenhleprojects.co.za

🌐 www.mbewenhleprojects.co.za

Mr B.C.MBEWE

Managing Director

Reg No. 2015/224214/07

Zone 5 Pimville 1809



Mbewenhle
Projects ■ ■



Pimville Zone 5- City of Johannesburg
Gauteng - Soweto- 1868

Mbewenhle

Projects ■ ■ Reg No.2015/224214/07



www.mbewenhleprojects.co.za

GDE – Glenhazel	Marlyne	011 355 0905	R447788	OCT-2016
City Parks	Mphumelelo	011 7126600	R 297,000.00	November 2017
City Parks	Dineo	011 7126600	R 278,980.00	October 2018
City Parks	Abram Maja	011 7126600	R 389,475.90	November 2018
City Parks	Ann Prestorious	011 7126600	R 235,879.98	January 2019
Gauteng Department of Education	Mpilo Ngcoya	011 843 6824	R 434,599.00	06/05/2021
Gauteng Department of Education	Ntombizanele Thwala	011 843 6824	R 85,989.00	05/04/2020
Gauteng Department of Education	Mpilo Ngcoya	011 843 6824	R 434,170.00	05/05/2021

Tel: 076 728 6606

☎ **FAX: 086 597 0144**

✉ info@mbewenhleprojects.co.za

🖱 www.mbewenhleprojects.co.za

Mr B.C.MBEWE

Managing Director

Reg No. 2015/224214/07

Zone 5 Pimville 1809



Mbewenhle

Projects ■ ■



Our Core Values ..

- Meeting and exceeding customer requirements through superior service.
- Professionalism and integrity.
- Environmentally friendly processes.
- Community development.
- Spirit of 'ubuntu' in the development of teamwork.



Reg No. 2015/224214/07
www.mbewenhleprojects.co.za

SERVICES

Construction
Plumbing
Horticulture Services
Security
Advisory Services



Mbewenhle
Projects ■ ■

Reg No. 2015/224214/07

Mbewenhle

Projects ■ ■



info@mbewenhleprojects.co.za





Pimville Zone 5- City of Johannesburg
Gauteng - Soweto- 1868

Mbewenhle

Projects ■ ■ Reg No.2015/224214/07



www.mbewenhleprojects.co.za



DEVELOPMENT THROUGH PARTNERSHIP

construction industry development board

Home

Contractor Detail

Print

Contractor Detail

CRS Number:	10075220	Status:	Active
Contractor Name:	MBEWENHLE PROJECTS (PTY) LTD	Type of Enterprise:	Private Company
Trading Name:	MBEWENHLE PROJECTS (PTY) LTD	Expiry Date:	2024/08/02

Contractor Grades

Grade:	3SH PE, Update Date: 2022/03/03
Grade:	3GB PE, Update Date: 2022/03/03
Grade:	1SO PE, Update Date: 2021/07/19
Grade:	1CE PE, Update Date: 2021/07/19

Back

Copyright © cidb 2011. All rights reserved

[Website technical enquires contact](#)

Tel: 076 728 6606

FAX: 086 597 0144

info@mbewenhleprojects.co.za

www.mbewenhleprojects.co.za

Mr B.C.MBEWE

Managing Director

Reg No. 2015/224214/07

Zone 5 Pimville 1809



Mbewenhle

Projects ■ ■



Reg No.2015/224214/07
5325 Zone 5 Pimville 1809

TEL: 076 728 6606
FAX: 086 597 0144

Email: mbewenhleprojects@gmail.com
info@mbewenhleprojects.co.za



Mbewenhle

Projects ■ ■

● ● **Mbewenhle Projects.co.za**